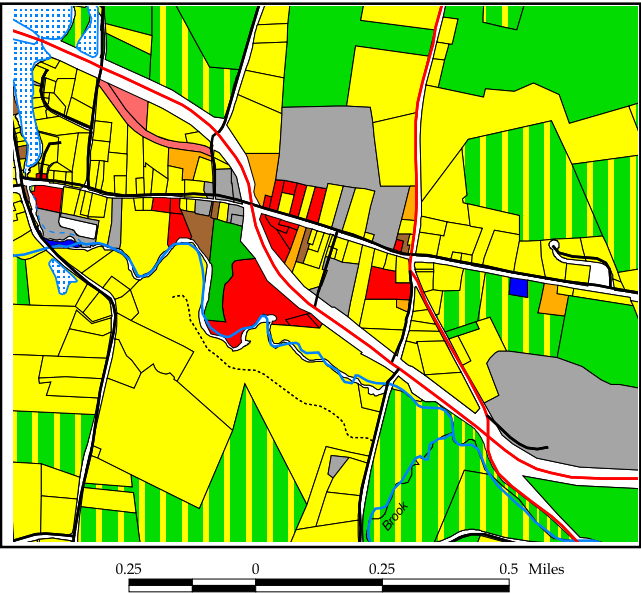
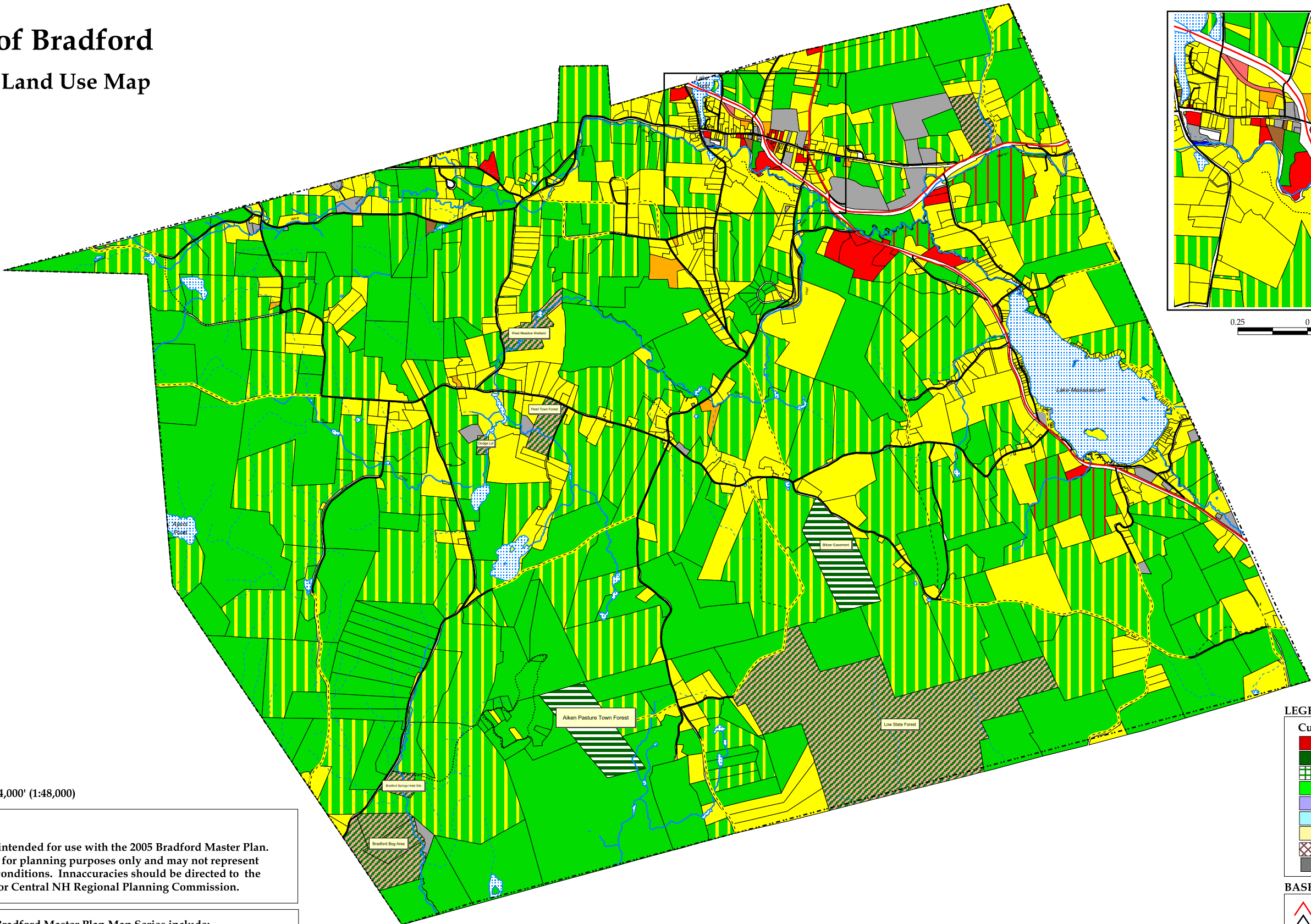


Town of Bradford  
Existing Land Use Map  
April 2006



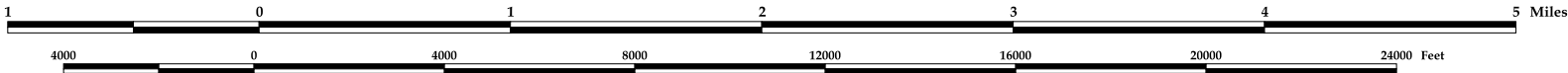
N  
1" = 4,000' (1:48,000)

**DISCLAIMER:**  
This map series is intended for use with the 2005 Bradford Master Plan. Maps are intended for planning purposes only and may not represent actual geographic conditions. Innaccuracies should be directed to the Town of Bradford or Central NH Regional Planning Commission.

Data Sources for Bradford Master Plan Map Series include:  
USGS quadrangles through NH GRANIT (1:24,000), NH Department of Transportation, NH Department of Environmental Services, US Geological Resources, subcommittee input, and Town of Bradford.

Map prepared by  
Central New Hampshire Regional Planning Commission  
for the Bradford Master Plan, April 2006

THIS MAP IS NOT COMPLETE. THE FINAL MAP IS AVAILABLE AT THE TOWN HALL.



**LEGEND**

**Current Land Use**

- Commercial
- Current Use Farmland
- Current Use Managed
- Current Use Unmanaged
- Tax Exempt Town
- Tax Exempt State
- Single Family Residential
- Multifamily Residential
- Utility

**BASE LEGEND**

- Class I & II Secondary State Highways
- Class V Town Maintained Roads
- Class VI Town Unmaintained Roads
- Other Roads (Private, Trails, etc)
- Political Boundary
- Rivers and Streams
- Intermittent Streams
- Water Bodies
- National Wetlands Inventory

\*Note: The National Wetlands Inventory does not include all wetlands.